



MULTIDIMENSIONAL POVERTY INDEX (MPI) AND GLOBAL HUNGER INDEX (GHI) IN CHARTS

www.globalhungerindex.org

Global poverty is measured by certain metrics, such as the **Multidimensional Poverty Index (MPI) and the Global Hunger Index (GHI)**.

A collection of charts, maps and graphs exploring global hunger — in a world that has enough food to feed everyone.

Global hunger has severe – and often deadly – consequences, and often affects the most vulnerable: Children.

Hunger is measured by the Global Hunger Index (GHI) and – despite advances in fighting hunger – applying the GHI paints a solemn picture of the world in the twenty-first century.

Multidimensional Poverty Index (MPI) charts, maps and graphs

How poverty is measured

What the Multidimensional Poverty Index shows

Where extreme poverty is most prevalent

How extreme poverty affects women

How extreme poverty affects children

Global poverty from 1900-today

Improvement in the Global Hunger Index by country 2000-2017

Predicted global extreme poverty by 2030

If the world was 100 people

Global Hunger Index (GHI) charts, maps and graphs

How the GHI is calculated

Applying the GHI to the world

The countries affected most by hunger

The cycle of hunger

Global hunger over time

Countries that have made progress tackling hunger

The link between poverty and hunger

The link between food and the environment

How much water it takes to produce food

The link between climate change and global hunger

The scourge of child hunger

The anatomy of child hunger

The detrimental effects of stunting in children

Global agricultural productivity

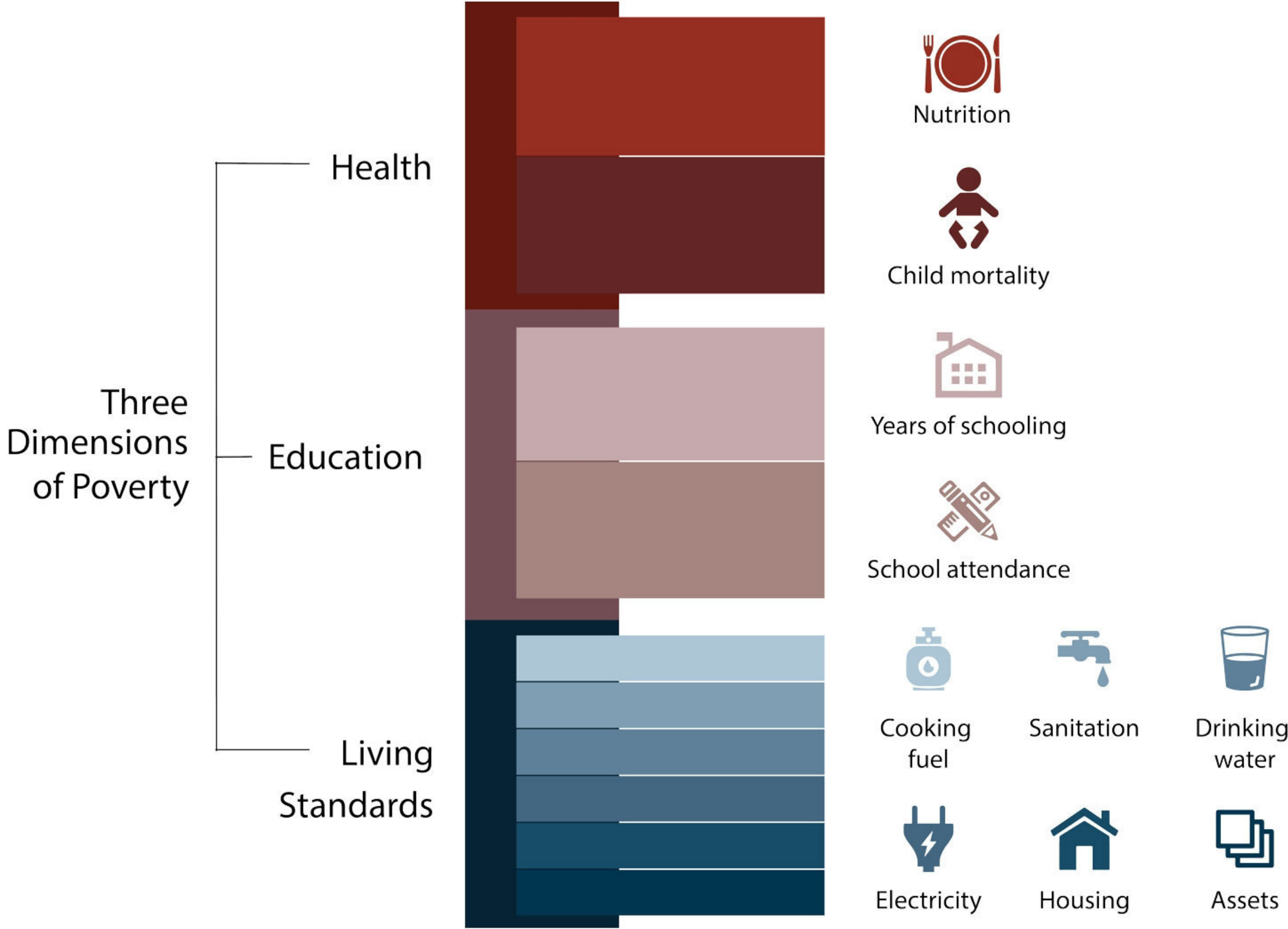
Read More: theglobalist.com

[To read the Global Hunger Index click here](#)

[To go deeper, also browse Global Poverty in Charts by clicking here](#)

2018 Global Multidimensional Poverty Index (MPI)

The global MPI directly measures the deprivations people face at the same time in different aspects of their lives. The MPI has three dimensions and ten indicators.



A person is MPI poor if he or she is deprived in **1/3** or more of these weighted indicators, where health and education indicators are weighted at **1/6** and living standards indicators at **1/18**.

The global MPI helps to end poverty in all its forms and dimensions.

#MultidimensionalPovertyIndex #MPI4SDGs
For more information please visit ophi.org.uk

2018 Global Multidimensional Poverty Index (MPI)

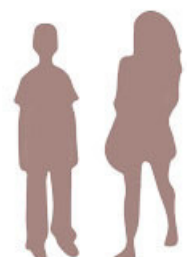
The 2018 global MPI estimations show:



Today, there are **1.3 billion** MPI poor people.

83%

of the MPI poor live in Sub-Saharan Africa and South Asia.



Half of MPI poor people are children.

90%

of all children are MPI poor in South Sudan and Niger.

35 countries

at least half of all children are MPI poor.

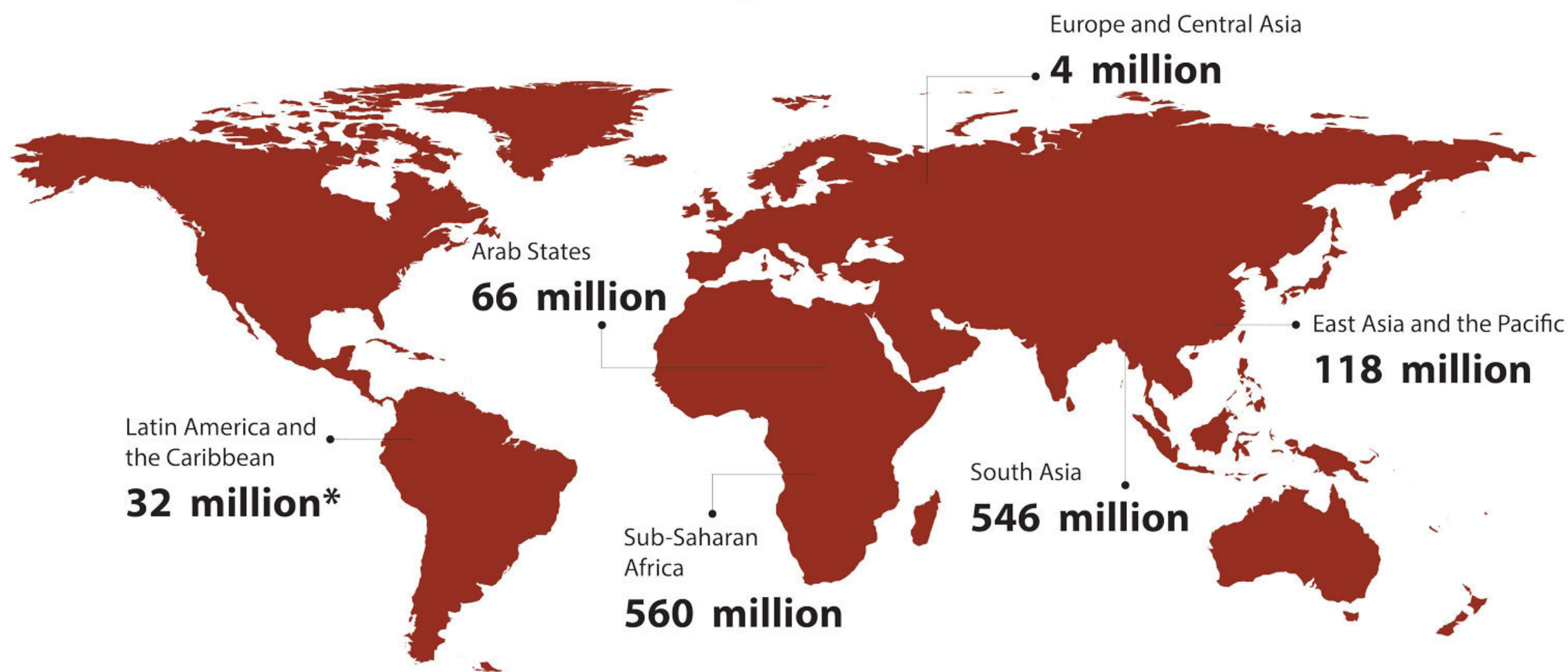


Two-thirds of all multidimensionally poor people live in middle-income countries.

46%

of those who are multidimensionally poor live in severe poverty, meaning they are deprived in at least half of the weighted indicators in health, education and living standards.

Where Do 1.3 billion MPI Poor People Live?



Countries with the largest number of people living in multidimensional poverty



INDIA
(364 million)



NIGERIA
(97 million)



ETHIOPIA
(86 million)



PAKISTAN
(85 million)



BANGLADESH
(67 million)

*Preliminary estimates, does not include data for Brazil.

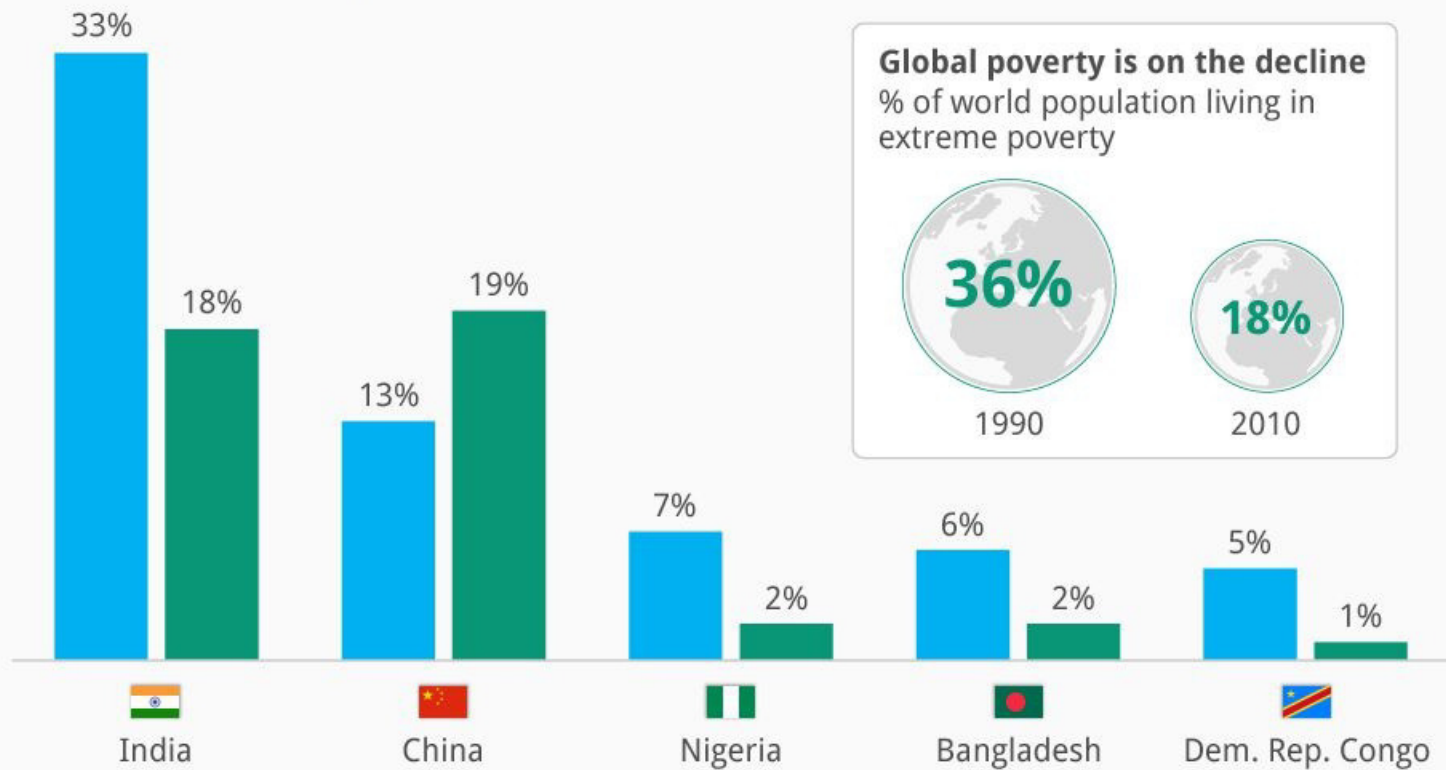
The global MPI helps to end poverty in all its forms and dimensions.

#MultidimensionalPovertyIndex #MPI4SDGs

For more information please visit ophi.org.uk

64% of the World's Extremely Poor Live in Just 5 Countries

■ % of extremely poor* ■ % of world population



* extreme poverty is defined as living on less than \$1.25 a day;
data as of 2010

Source: World Bank



HOW EXTREME POVERTY AFFECTS WOMEN & GIRLS



100
COUNTRIES

have laws that restrict the types of work women can do, so women are often excluded from participating in the formal workforce.



WOMEN MAKE
UP NEARLY
50%

of agricultural workers in Africa, a sector which is highly susceptible to extreme weather events such as flooding and droughts.



28
MILLION
GIRLS

in Africa will never go to school. Millions will undergo the horrific practice of FGM and early marriage before the age of 15. These factors continue the cycle of injustice and poverty for young girls.



LESS THAN
20%

of landholders are women. Without title deeds to land, women are often kicked off their properties when a husband or male relative dies.



OVER
50%

of all preventable deaths from pregnancy complications occur in sub-Saharan Africa, where extreme poverty is highest.

Malnutrition increases the risk of health complications for women during pregnancy and childbirth.

400 thousand children are born every day.
This is what happens to them.



In total **20,000** children die every day.


5,000 die because of poor sanitation.


60,000 don't get to complete basic education.


140,000 are born into houses without good sanitation. This opens the door to illness.

With your help, we can break the cycle.

Take a different way out.

 No child should be without clean water. Making this happen could gain **£750 million** in extra working days for the global economy.

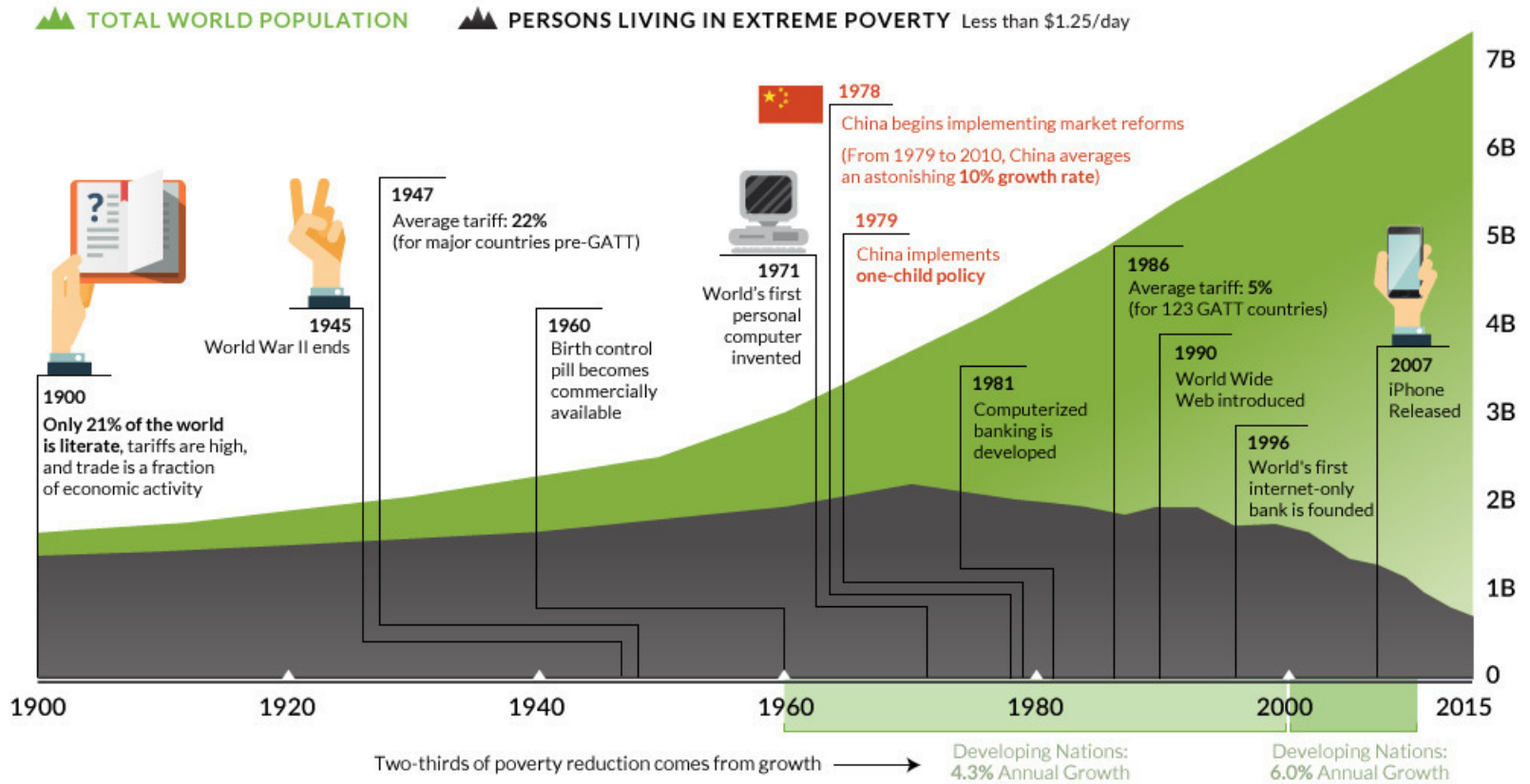
 Bringing universal secondary education to sub-saharan Africa could help us save **1.8 million lives**.

 Only 183 countries have **90 per cent immunization coverage** for a whole tranche of deadly childhood diseases. We need to get these successes to the rest.

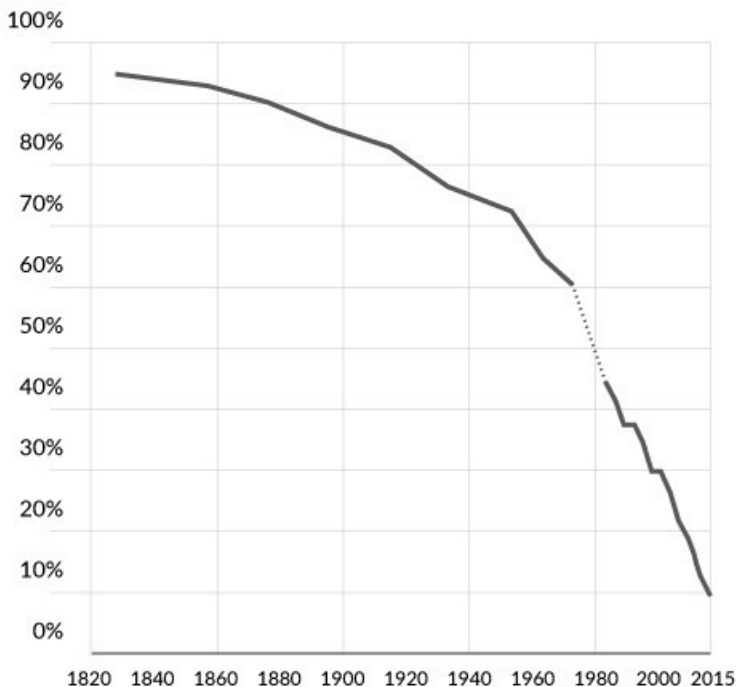
Invest in our future. Invest in children.

THE END OF WORLD POVERTY IS IN SIGHT

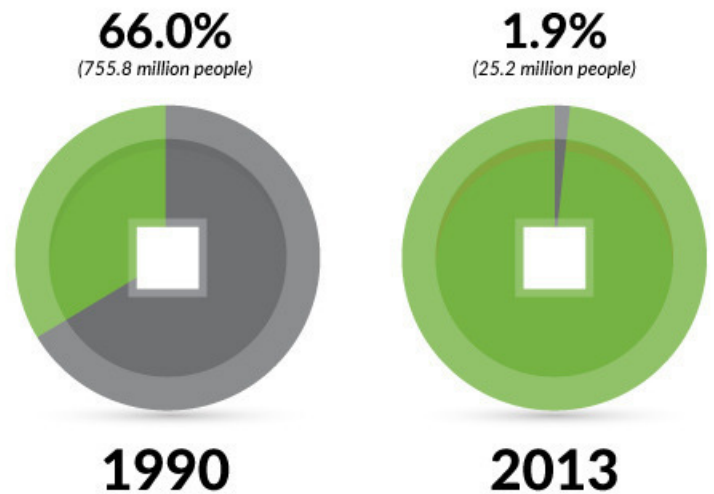
The number of people living in extreme poverty has been cut in half since 1990



% OF WORLD POPULATION LIVING IN ABSOLUTE POVERTY*



% OF CHINESE POPULATION LIVING IN ABSOLUTE POVERTY*



Since 1990, global poverty has been cut in half, and it's mainly because of China.

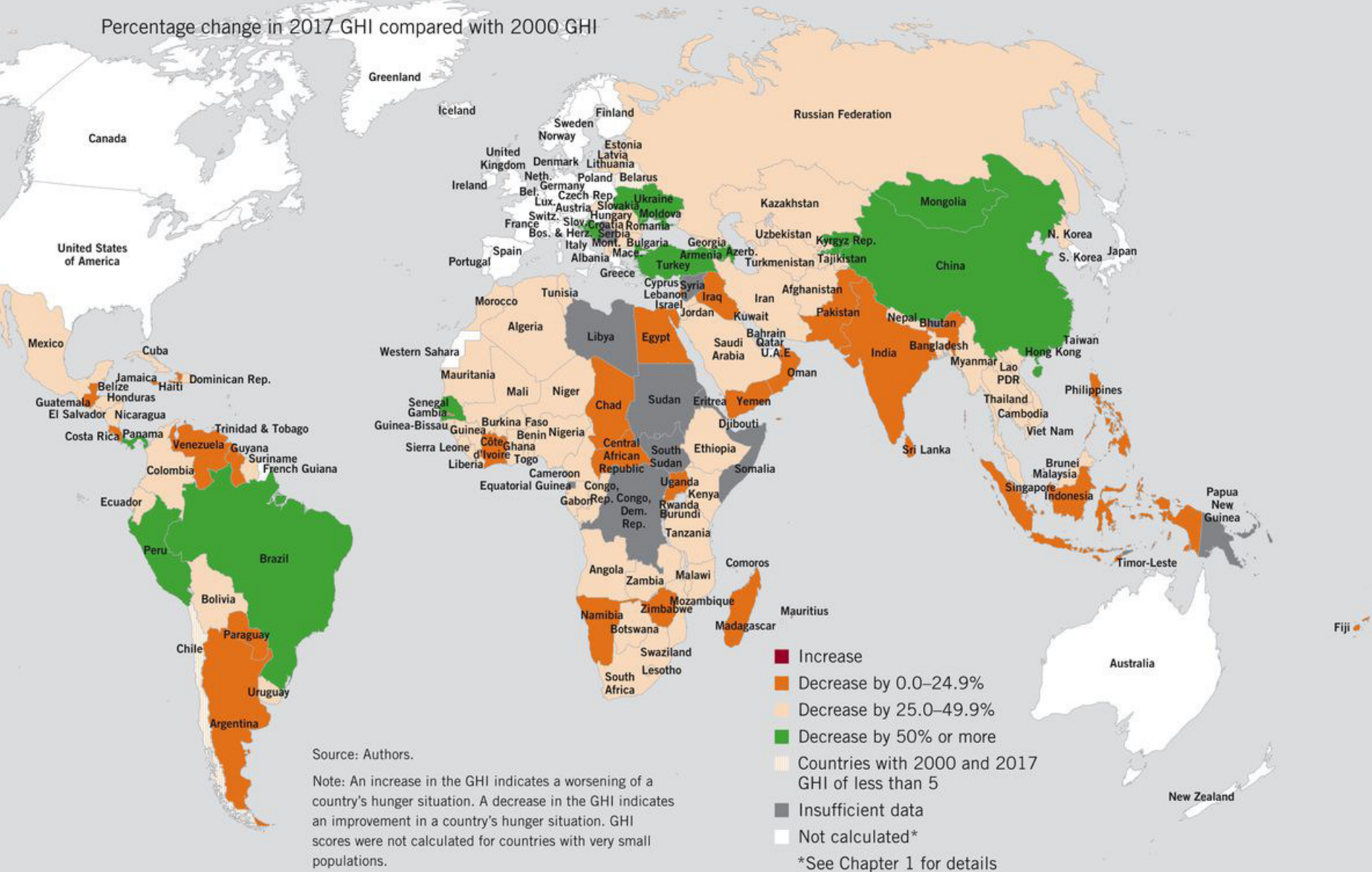
*Using a \$1.90 day/ PPP poverty line
SOURCES: ourworldindata.org, World Bank

..... Denotes trend line



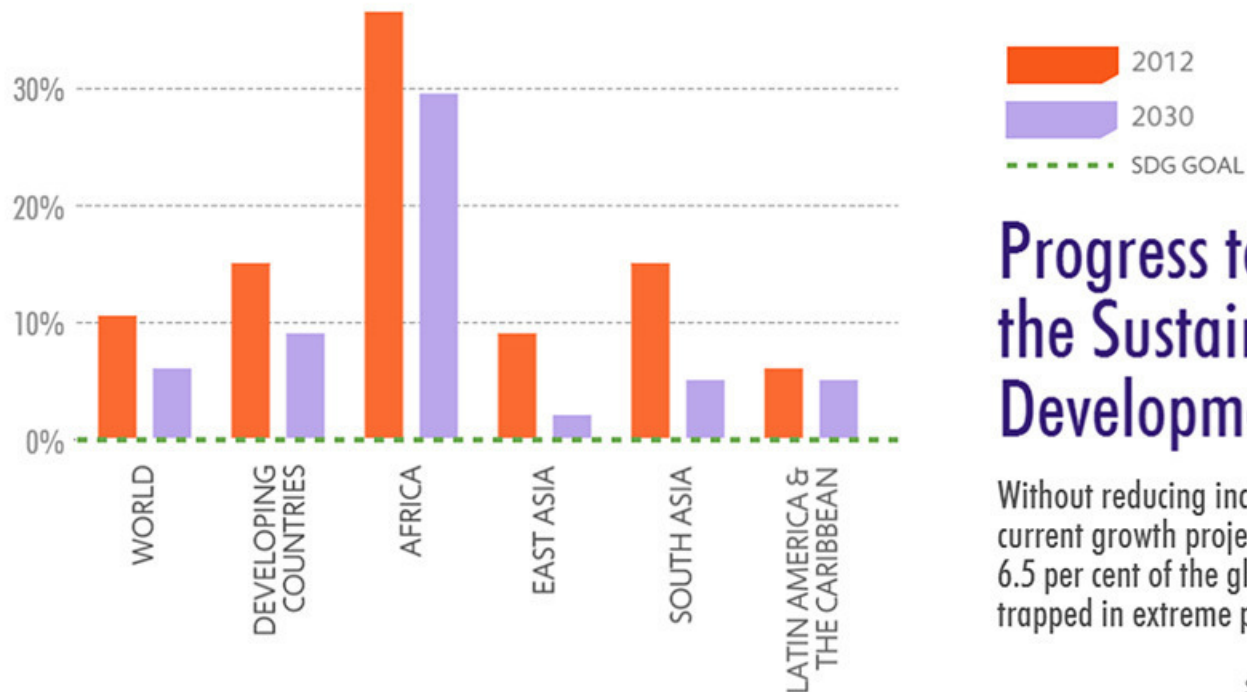
FIGURE 2.2 **COUNTRY PROGRESS IN REDUCING GHI SCORES**

Percentage change in 2017 GHI compared with 2000 GHI





Extreme poverty, 2012 & 2030 (projections based on current growth trends)



Progress toward the Sustainable Development Goals

Without reducing income inequality, current growth projections would leave 6.5 per cent of the global population trapped in extreme poverty by 2030

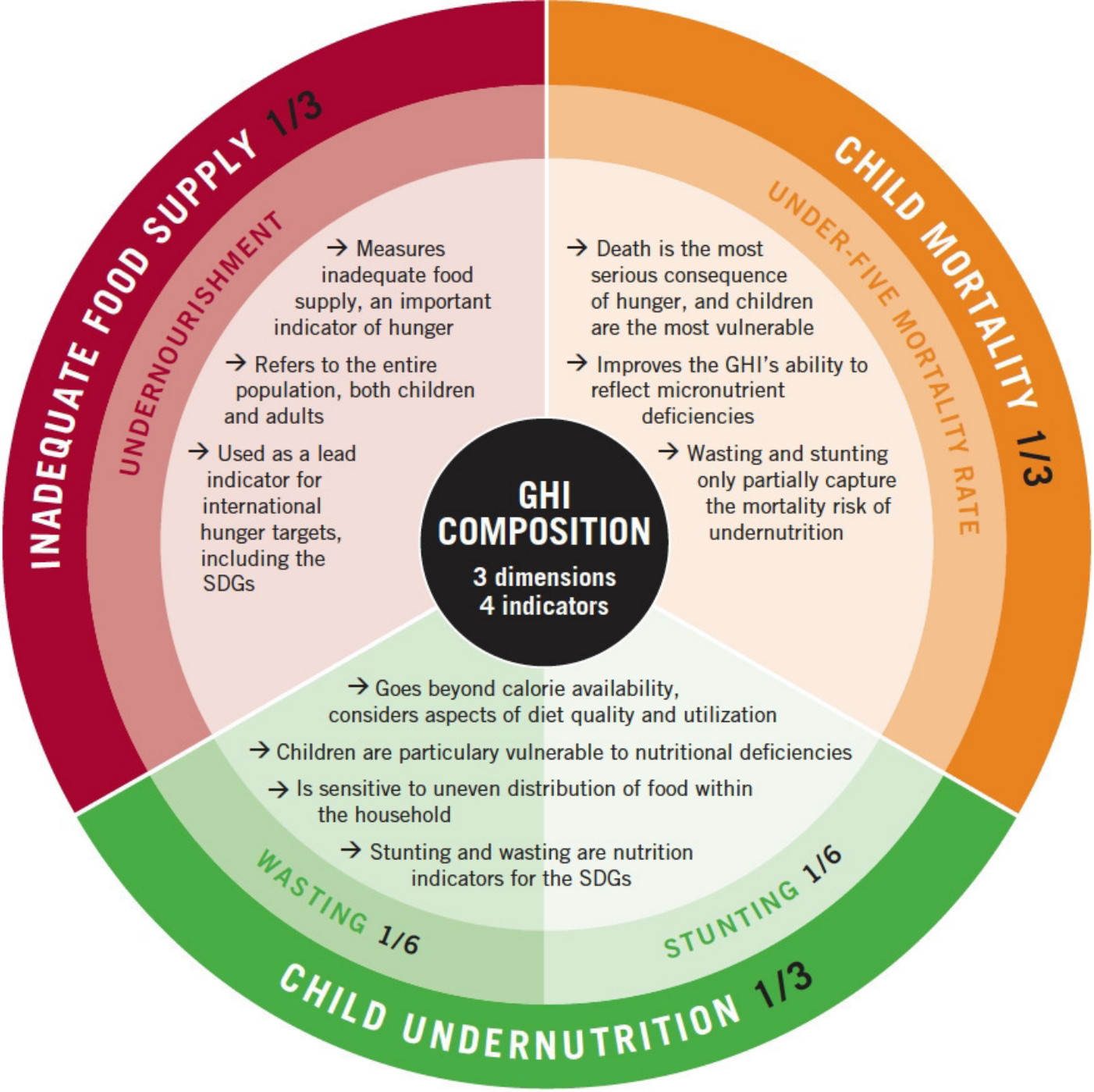
Source: World Economic Situation and Prospects 2017



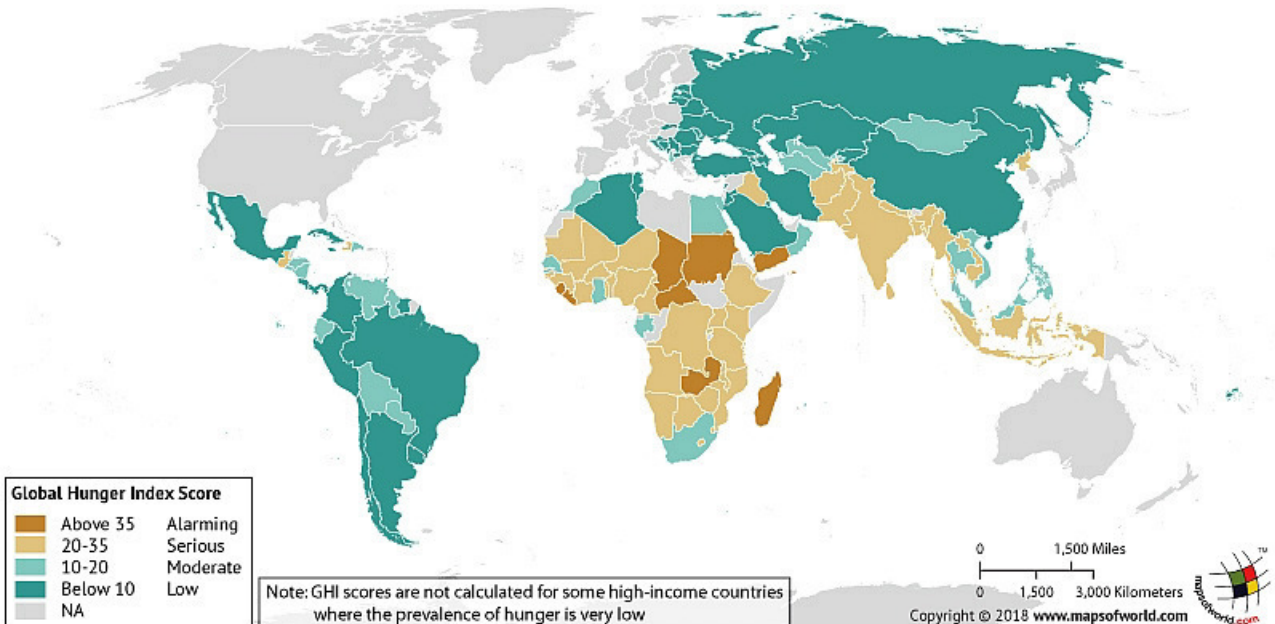
The WORLD as 100 PEOPLE



Sources: 2012 - Fritz Erickson, Provost and Vice President for Academic Affairs, Ferris State University (Formerly Dean of Professional and Graduate Studies, University of Wisconsin - Green Bay) and John A. Vonk, University of Northern Colorado, 2006; Returning Peace Corps Volunteers of Madison Wisconsin, Unheard Voices: Celebrating Cultures from the Developing World, 1992; Donella H. Meadows, The Global Citizen, May 31, 1990.



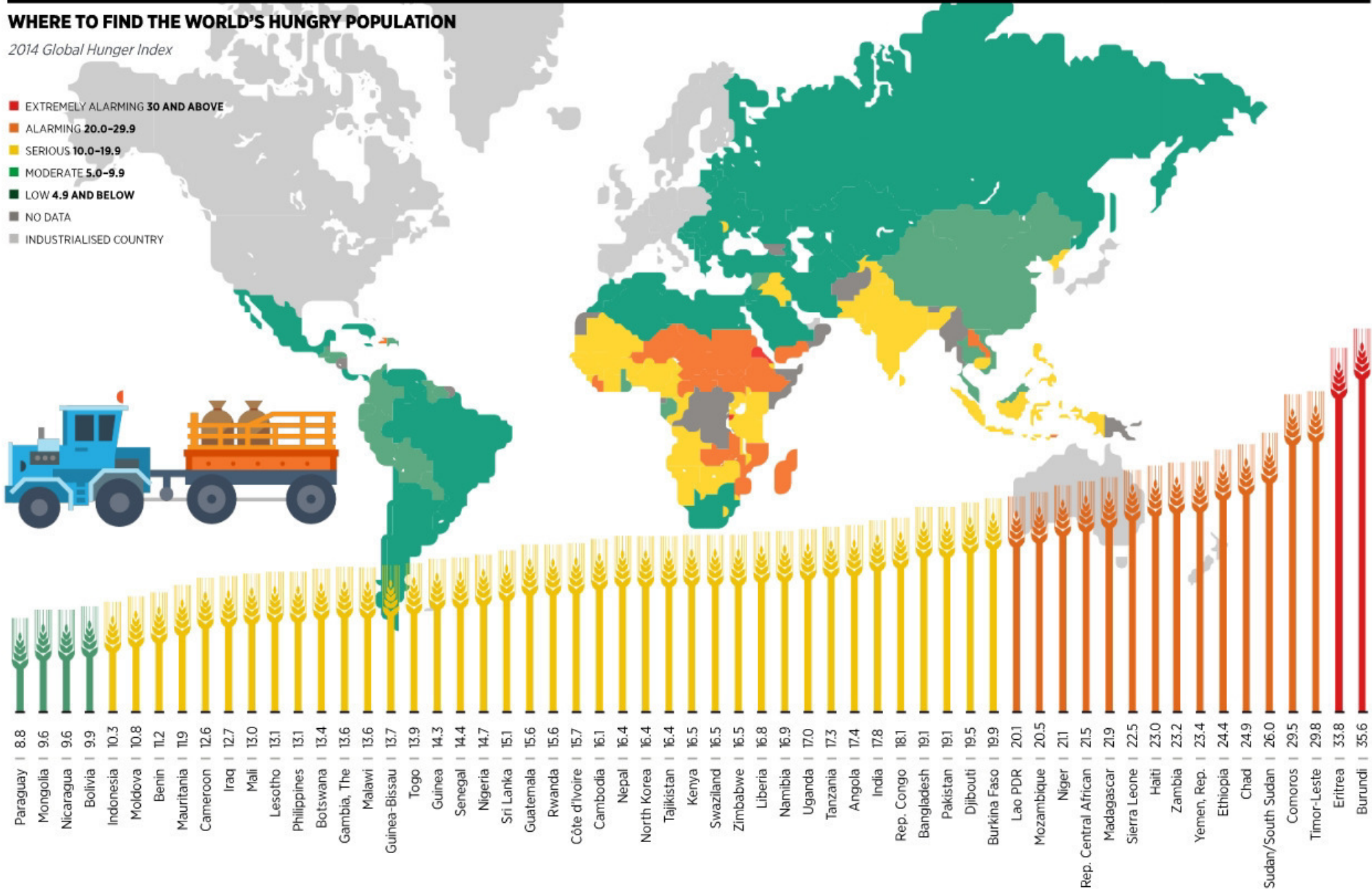
Global Hunger Index by Country: 2017



WHERE TO FIND THE WORLD'S HUNGRY POPULATION

2014 Global Hunger Index

- EXTREMELY ALARMING 30 AND ABOVE
- ALARMING 20.0-29.9
- SERIOUS 10.0-19.9
- MODERATE 5.0-9.9
- LOW 4.9 AND BELOW
- NO DATA
- INDUSTRIALISED COUNTRY



THE CYCLE OF HUNGER

There are many ways hunger can trap people in a cycle of poverty and need. Here is how it can burden someone for a lifetime, and pass it on to the next generation.

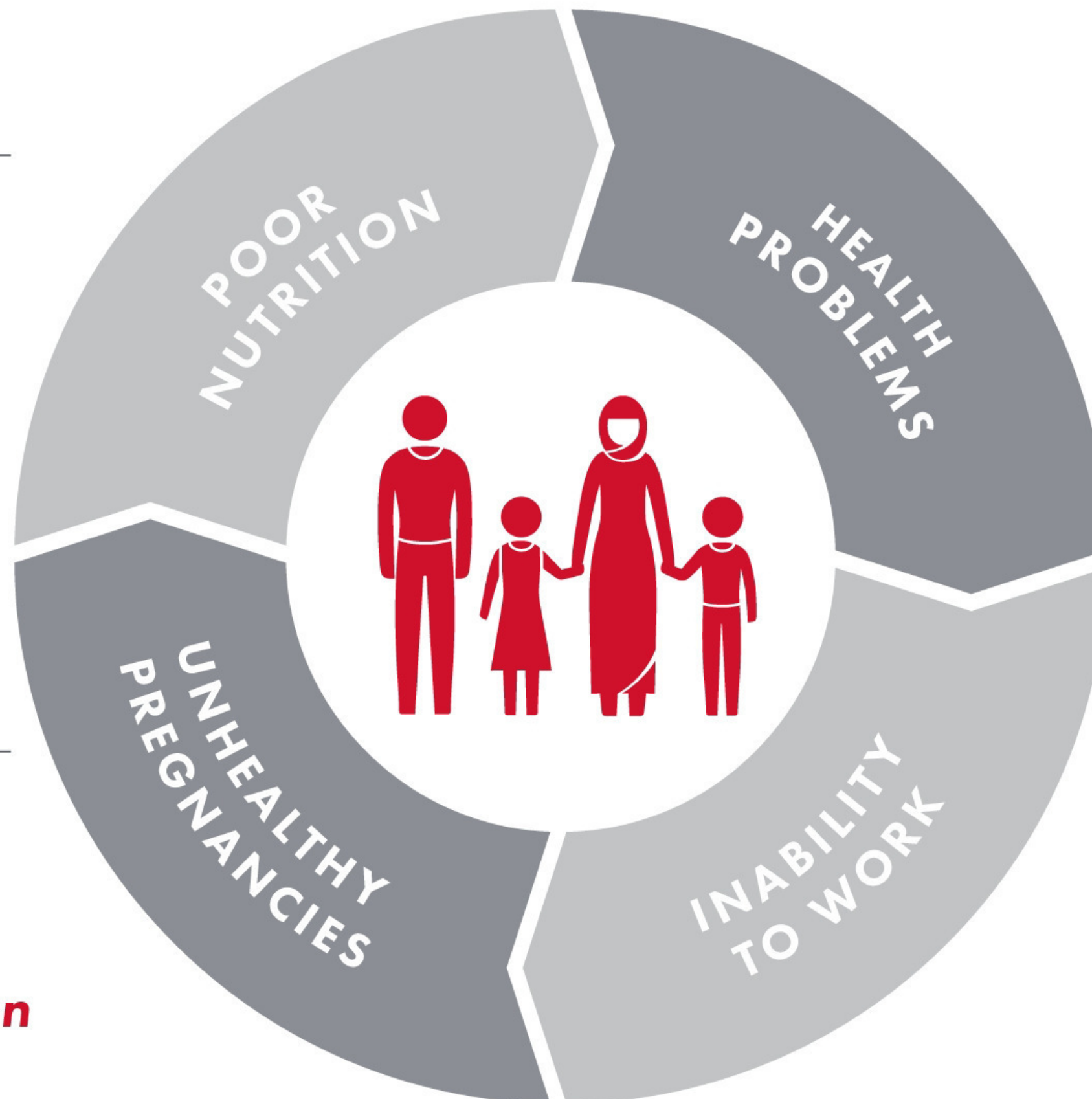


CHILDREN

Poor nutrition stunts physical and mental development

FAMILY

Poor health during pregnancy leads to an undernourished child—***starting the cycle again***



YOUTH

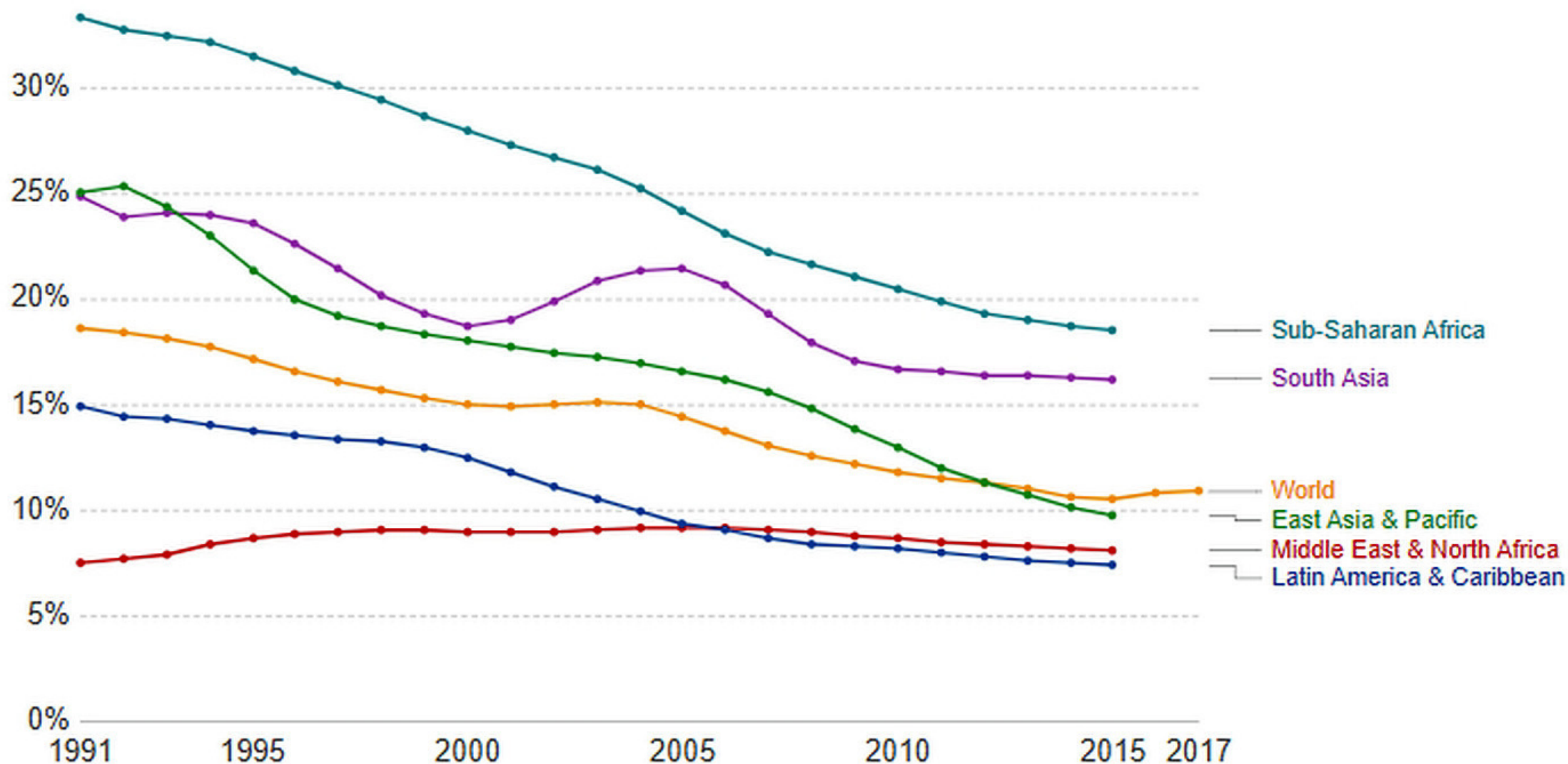
Chronic health problems keep kids out of school

ADULTS

A lack of education limits the ability to work

Share of the population that is undernourished

This is the main FAO hunger indicator. It measures the share of the population that has a caloric intake which is insufficient to meet the minimum energy requirements necessary for a given individual. Data showing as 5 may signify a prevalence of undernourishment below 5%. Regional aggregations are based on World Bank regions and exclude high-income countries. They may therefore differ from UN FAO regional figures.

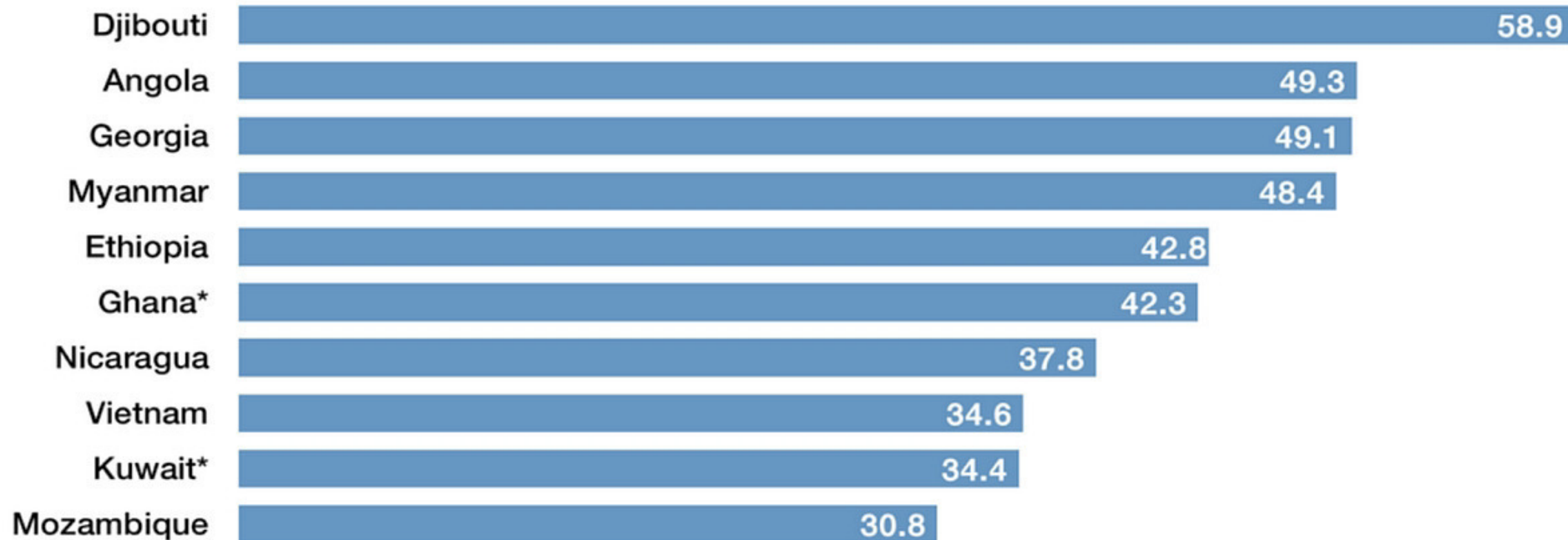


Source: UN Food and Agriculture Organization (FAO)

Note: Developed countries are not included in the regional estimates since the prevalence is below 5%.

These countries have made the most progress tackling hunger

Percentage point change in proportion of the population who are undernourished, 1990-2016



THE LINK BETWEEN POVERTY & HUNGER



NEARLY **1** IN 8

PEOPLE EXPERIENCE CHRONIC HUNGER.

THAT'S

870 MILLION
PEOPLE WORLDWIDE.

Of the 1.4 billion living in poverty, **1.0 billion** live in rural areas where **FARMING** is the main source of subsistence diets.



IFDC

is working to bring these farmers out of a cycle of poverty into a cycle of prosperity through greater access to modern agro-inputs and farming practices and the development of better-functioning agricultural markets.

Food Security and the Environment



Water Resources

Solar-powered irrigation helps farmers break the cycle of poverty, hunger, and malnutrition.



Aquaculture & Fisheries

Global supplies of wild and farmed seafood must be managed sustainably to meet rising demand.



Climate Impacts & Adaptation

Mapping and measuring the impacts of climate change on agriculture helps farmers adapt.



Food, Nutrition & Health

For smallholder farmers and their families, food security means better nutrition and overall health.



Crop & Livestock Systems

Rising demand for food changes how and where we produce it, with big environmental impacts.



Tropical Oil Crops

The rapid expansion of oil crops presents new challenges to ecosystems and farmer livelihoods.

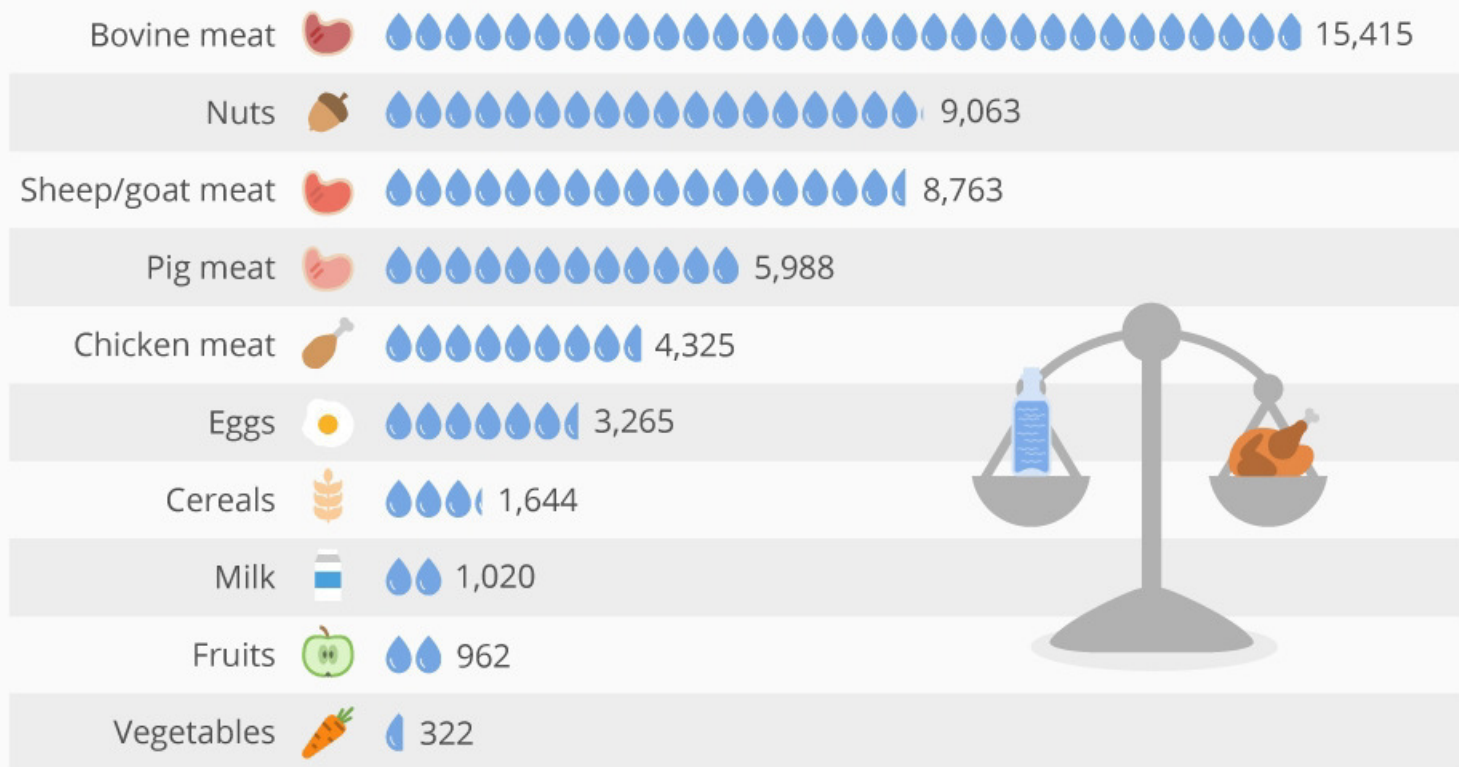


Data Science for Food Security

Big data and new analytical techniques mean better measurements and more targeted solutions to food insecurity.

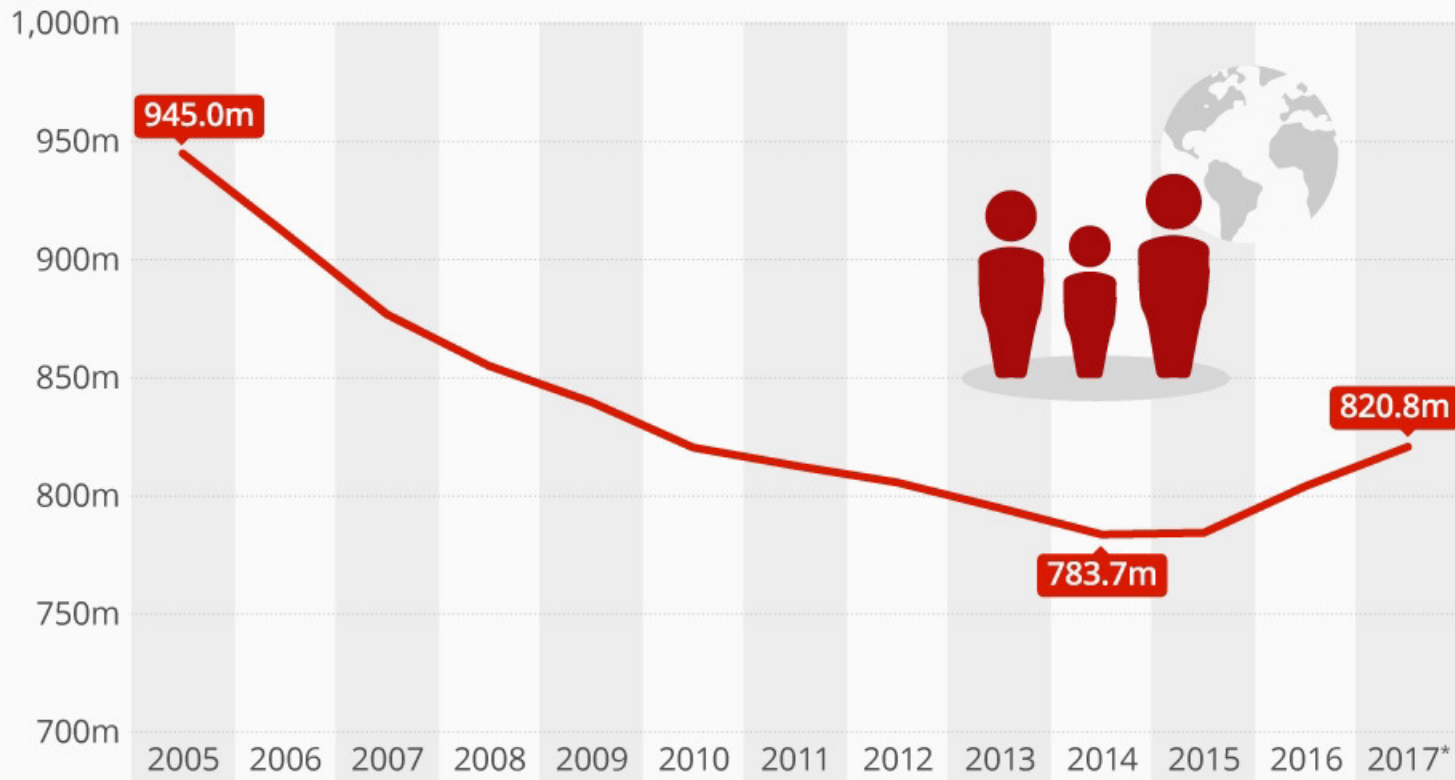
How Thirsty is Our Food?

Liters of water required to produce one kilogram of the following food products*



Extreme Weather Reverses Progress In Tackling Hunger

Number of malnourished people worldwide from 2005 to 2017*



CHILD HUNGER IS AN EPIDEMIC

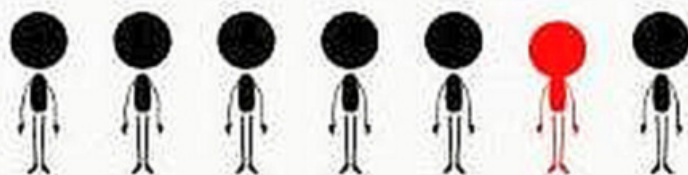
Each year, malnutrition affects millions of kids worldwide:

 **52** MILLION CHILDREN
are acutely malnourished

 **34** MILLION CHILDREN
are severely malnourished

 **1** MILLION CHILDREN
die from severe malnutrition

(This means malnutrition causes **15%** of all child deaths)



Together, we can
end child hunger

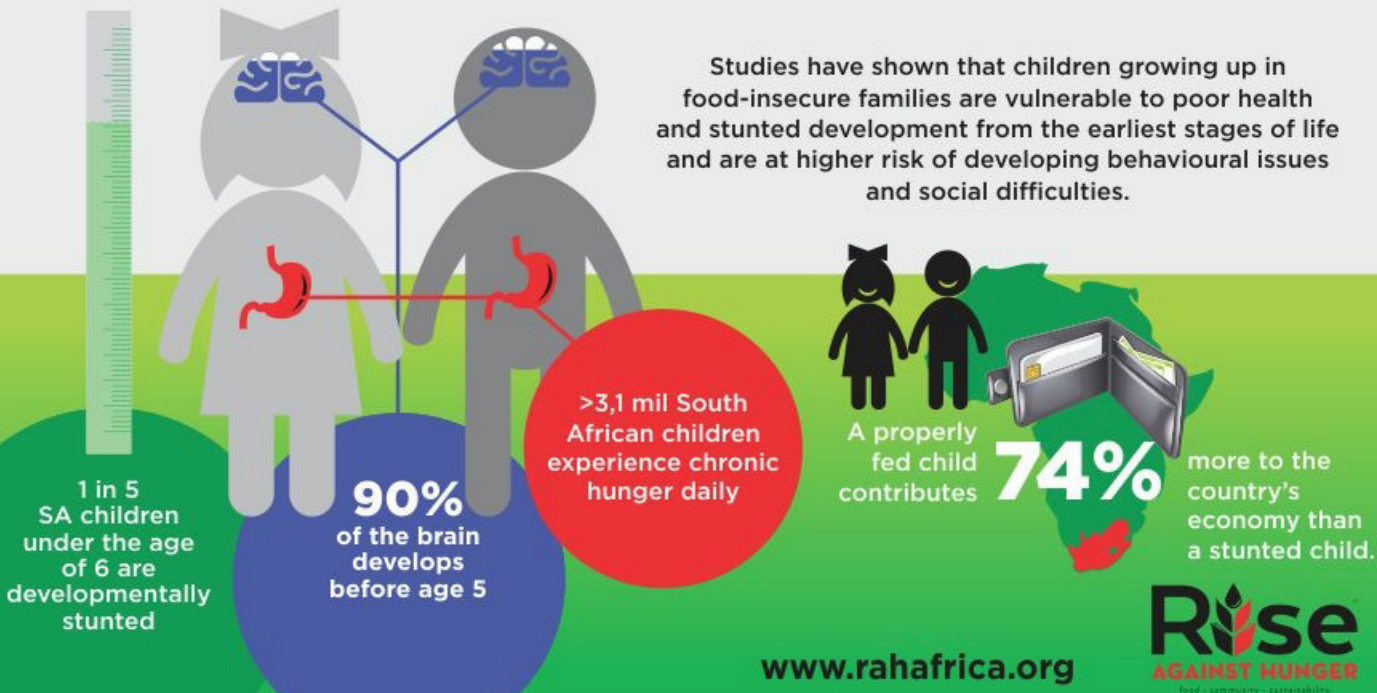
www.actionagainsthunger.ca

THE ANATOMY OF CHILD HUNGER

Good nutrition, particularly in the first three years of life, is important in establishing a good foundation that has implications for a child's future physical and mental health, academic achievement, and economic productivity.

Food insecurity is an obstacle that threatens that critical foundation.

Studies have shown that children growing up in food-insecure families are vulnerable to poor health and stunted development from the earliest stages of life and are at higher risk of developing behavioural issues and social difficulties.

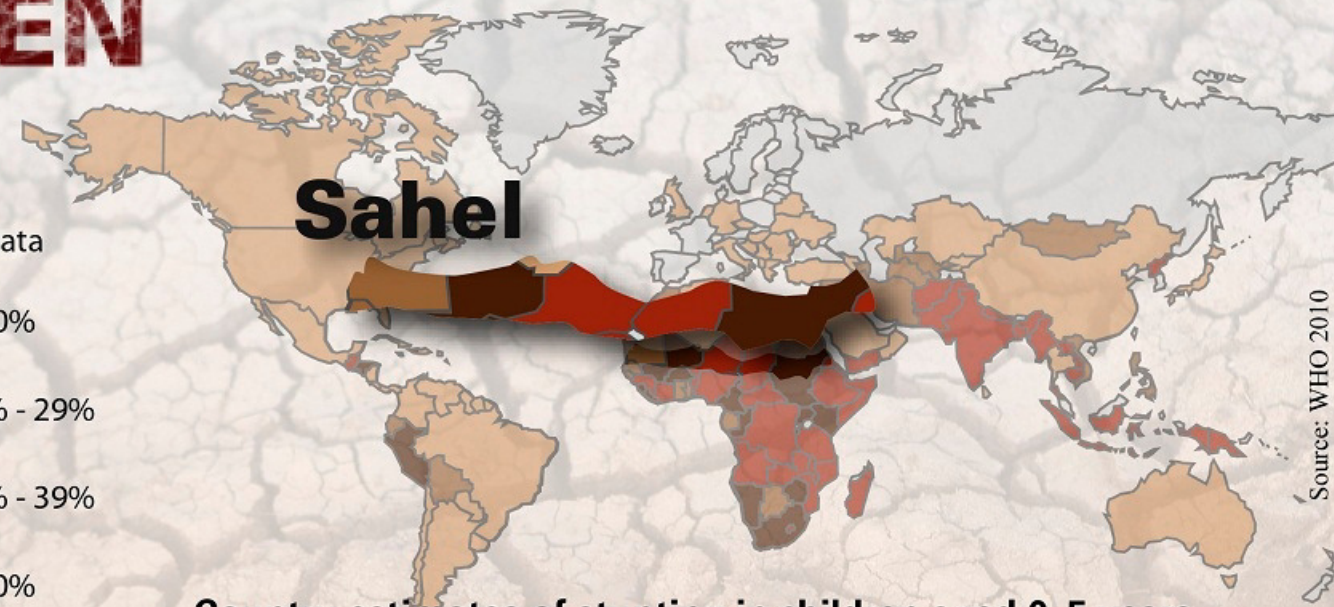


www.rahafrica.org

Rise
AGAINST HUNGER
food • community • sustainability

STUNTING IN CHILDREN

Stunting (low length- or height-for-age) in young children is a consequence of multiple factors that are often linked to poverty – including nutrition, health, sanitation and environment. Stunting can lead to developmental problems and is often impossible to correct - **but it can be prevented.**



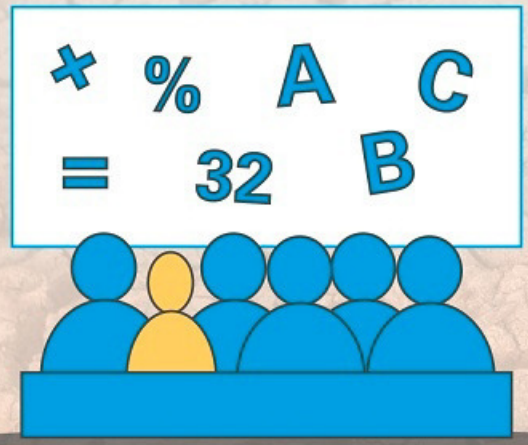
Country estimates of stunting in children aged 0–5 years

Source: WHO 2010



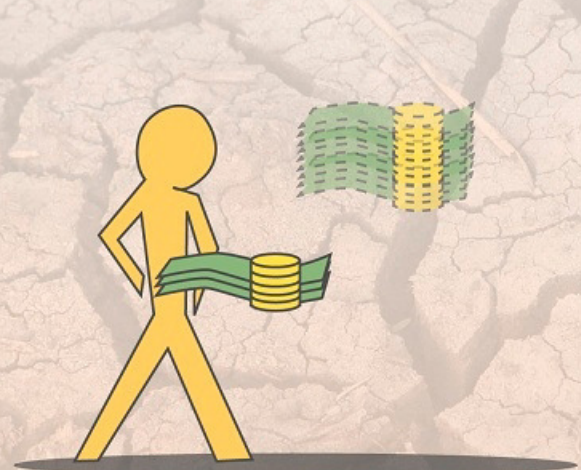
GROWING UP

A young child who does not get enough food and nutrients cannot grow properly. This condition is called 'stunting'. Stunting can already start in the womb of a malnourished mother.



EDUCATION

Stunted children often have irreversible developmental problems. Their potential is limited and they often do less well in school if they have access to education.



PROFESSIONAL LIFE

As a result, stunted children have fewer professional opportunities later in life and earn less, perpetuating poverty in their families.



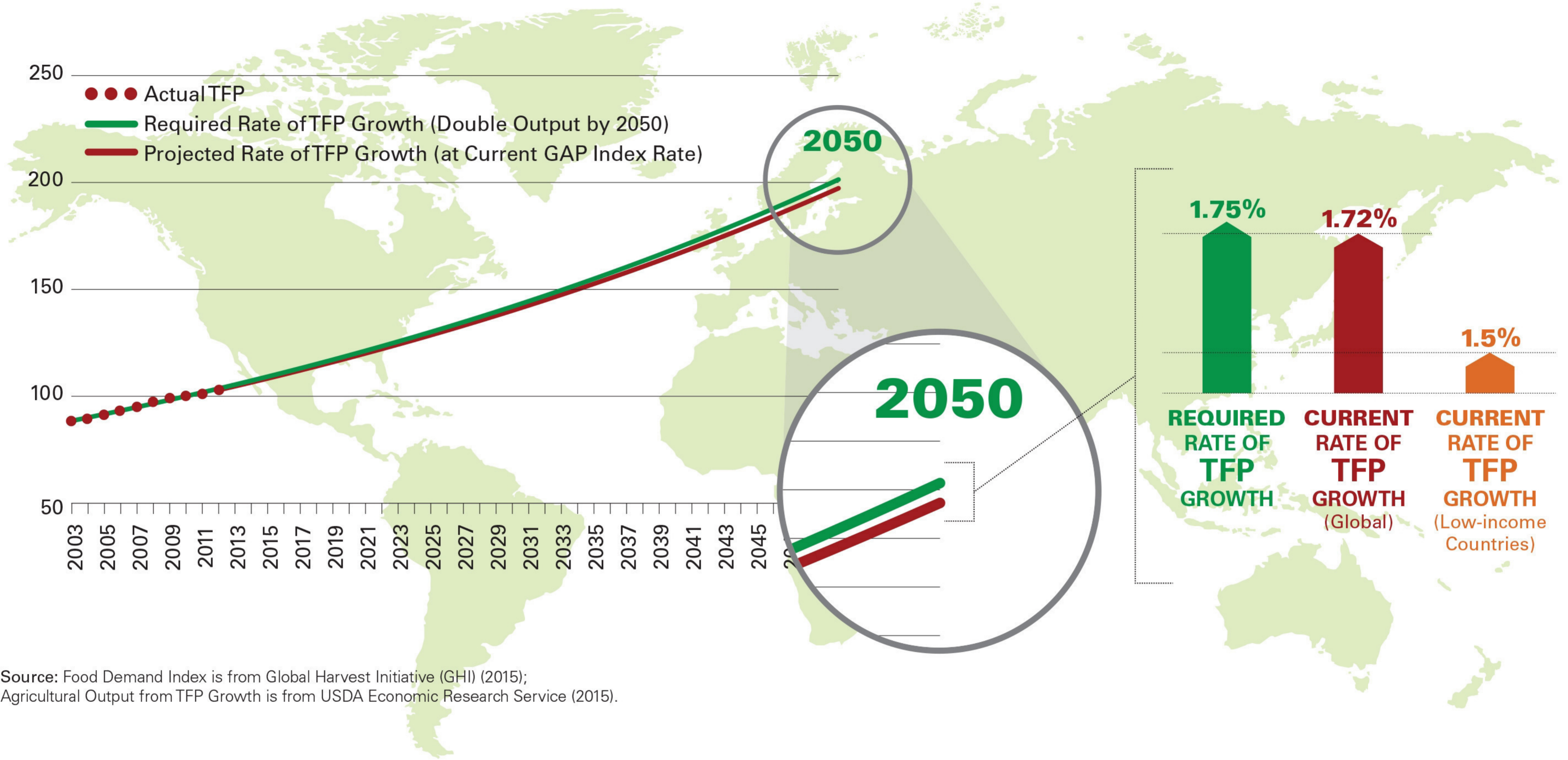
VICIOUS CYCLE

Low income, lack of healthcare and reduced access to proper nutrition will continue to impact the health of their children.

For more information check out the following article: www.unicef.org/aboutstunting



THE GLOBAL AGRICULTURAL PRODUCTIVITY (GAP) INDEX™



Source: Food Demand Index is from Global Harvest Initiative (GHI) (2015);
 Agricultural Output from TFP Growth is from USDA Economic Research Service (2015).